

Quick Install Guide

SEP sesam
V4.0/4.2



SEP AG *

©2011/ *SEP AG* / All rights reserved / Subject to alterations and errors

General information

Any form of reproduction, duplication, or dissemination of the contents of parts of this manual requires the prior written consent of the company *SEP AG*. When creating this publication greatest carefulness was spent regarding usefulness and accuracy of the contained information. However please take into account that this publication can contain errors. *SEP AG* cannot guarantee for the accuracy of the descriptions or their utilization.

Contents

1	Installation of <i>SEP sesam</i> V4.0/4.2 on Windows	4
1.1	Prerequisites	4
1.2	Installation	4
2	Installation of <i>SEP sesam</i> V4.0/4.2 on Linux	6
2.1	Prerequisites	6
2.2	Server installation package	6
2.3	Client installation package	6
2.4	GUI installation package	6
3	Installation of <i>SEP sesam</i> V4.2 on MacOS	8
3.1	Prerequisites	8
3.2	Client installation package	8
3.3	GUI installation package	8
4	Configuration - <i>SEP sesam</i> first steps	10
4.1	Step 1 Location	10
4.2	Step 2 Clients	10
4.3	Step 3 Backup Hardware - Where should the data be stored?	11
4.4	Step 4 Tasks - What should be backed up?	11
4.5	Step 5 Schedules - When should the data be backed up?	13
4.6	Step 6 Backup event - How should the backup start?	13

1 Installation of *SEP sesam* V4.0/4.2 on Windows

1.1 Prerequisites

Before starting the *SEP sesam* installation please make sure that you are logged in as local administrator or domain administrator. In case of remote access via remote desktop connection (RDC) the RDC administrator needs equivalent access rights as the local administrator. In order to install one or several *SEP sesam* components (*SEP sesam* server, Remote Device Server, Client, or GUI) an installation file is required which can be downloaded at <http://download.sep.de/windows/>. Please make sure to download a suitable file for your processor type.

If you are planning to install a server (including a GUI) or a GUI, Java Runtime Environment (JRE) 1.6 or higher has to be installed. For a server installation .Net Framework 3.0, 3.5, or 4.0 is obligatory, for all other *SEP sesam* components you can deselect .Net Framework functionality during installation.

x86 operating systems, using more than 3.25 GB RAM, have to either be reduced to 3.25 GB RAM or migrated to an x64 operating system. This is necessary since *SEP sesam* requires 64 KB blocks for LTO (Linear Tape Open), but those systems can only write 32 KB blocks on tape drive due to the automatically activated PAE (Physical Address Extension). Also a loader cannot be accessed properly by *SEP sesam*.

There are three different installation packages available providing either all or only single *SEP sesam* components. In the following we will explain the installation using solely the server installation package, which contains all *SEP sesam* components.

1.2 Installation

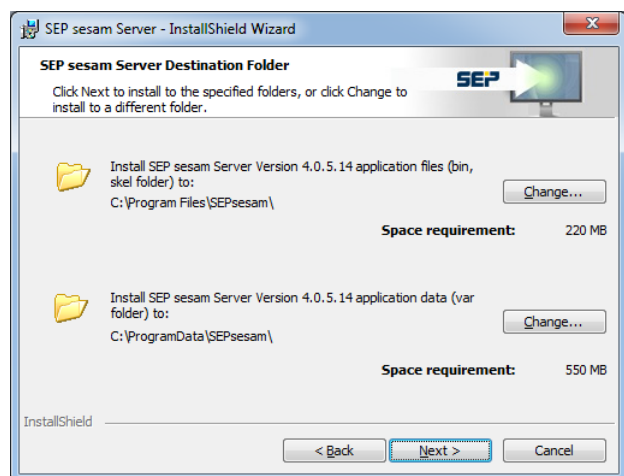
In order to install a *SEP sesam* component please choose the winXX directory on the CD/DVD, or choose the download folder where you saved the *SEP sesam* installation package. Start the installation by double-clicking on the `sesam-srv-<VersionsID>-windows.x<SysTyp>.exe` file.

Please note that on Windows 7 even if you are logged in as administrator you still have to explicitly execute the exe file as administrator.

After choosing your installation language, choose *Next*. Agree the license agreement and choose *Next* again.

As depicted in the adjacent figure choose the installation directory for the program files (includes folders `<SESAM_ROOT>\bin` and `<SESAM_ROOT>\skel`) and the application data (includes folder `<SESAM_ROOT>\var`, in case of a server installation this folder might require a lot of storage) and click *Next*.

Now you have to decide which of the four *SEP sesam* components (*SEP sesam* server, RDS, GUI, or Client) you want to install. For an RDS installation you have the possibility to optionally include a GUI and for a GUI installation you have the possibility to optionally include a Client by checking the check box. The adjacent figure shows the four features that can be selected.



After choosing a suitable *SEP sesam* component choose *Next*.

***SEP sesam* Server**

In case of a *SEP sesam* server installation you only have to click on *Install* to install the server on your operating system.

Finally, click on *Finish* to complete the installation.

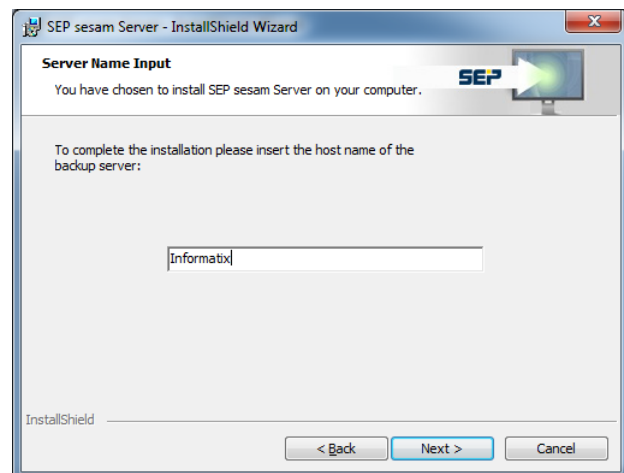
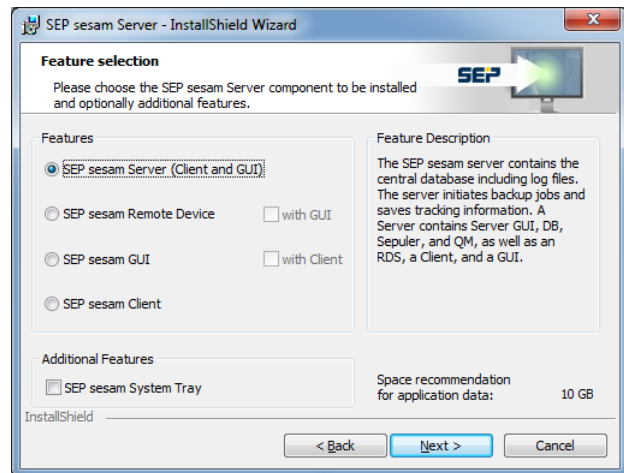
***SEP sesam* RDS, GUI, Client**

For all remaining *SEP sesam* component you have to insert the host name of the *SEP sesam* server in the next dialog. Thereby the host name may not contain underscores.

Please note, that you have to insert the hostname and NOT the IP address of the *SEP sesam* server. In the given example we used the server name *informatix*. After inserting the *SEP sesam* server name please press *Next*.

The firewall information dialog is only intended for information purposes. Take notice of the information and click *OK*. Now you only have to click on *Install* and the chosen *SEP sesam* component will be installed.

Finally, click on *Finish* to complete the installation.



2 Installation of *SEP sesam* V4.0/4.2 on Linux

2.1 Prerequisites

You have to be logged in as user root (not user with root rights!). In order to install one or several *SEP sesam* components an installation file is required which can be downloaded at <http://download.sep.de/>. Please make sure to download a suitable file for your processor type.

If you are planning to install a server (including a GUI) or a GUI, Java Runtime Environment (JRE) 1.6 or higher has to be installed. 64 bit operating systems need a PostgreSQL database to be installed.

For some Linux distributions (e.g. SUSE and RedHat) we provide RPM installation files. Please note that RPM files are only suitable for certain Linux operating systems. For Debian Linux distributions we provide *.deb files. Please note that *.deb files are also only suitable for certain Linux distributions.

2.2 Server installation package

In order to install a *SEP sesam* server please choose the `linux` directory on the CD/DVD, or choose the download folder where you saved the *SEP sesam* server installation package.

To install RPM files the following command should be used:

```
rpm -Uvh sesam_srv<Version.OS.SystemTyp>.rpm
```

To install *.deb files the following command should be used:

```
dpkg -i sesam-srv<Version.SystemTyp>.deb
```

Since the *SEP sesam* server includes a GUI, a GUI is automatically installed on your system. If the `display` variable is checked the GUI starts right after installation is complete. To manually start the GUI please use the following command:

```
/opt/sesam/bin/gui/sesam_gui
```

2.3 Client installation package

In order to install a *SEP sesam* client please choose the `linux` directory on the CD/DVD, or choose the download folder where you saved the *SEP sesam* client installation package.

To install RPM files the following command should be used:

```
rpm -Uvh sesam_cli<Version.OS.SystemTyp>.rpm
```

To install *.deb files the following command should be used:

```
dpkg -i sesam-cli<Version.SystemTyp>.deb
```

Since the *SEP sesam* server needs access rights to the client to be able to contact and backup the client, you need to execute the following command on the client

```
/opt/sesam/bin/sesam/sm_setup set_client <SEP sesam Server Name>
```

2.4 GUI installation package

You can either install solely the GUI package or in addition to a client. Since an *SEP sesam* server installation package includes a GUI it will automatically be installed on a server.

In order to install a *SEP sesam* GUI please choose the `linux` directory on the CD/DVD, or choose the download folder where you saved the *SEP sesam* GUI installation package.

To install RPM files the following command should be used:

```
rpm -Uvh sesam_gui<Version.OS.SystemTyp>.rpm
```

To install *.deb files the following command should be used:

```
dpkg -i sesam_gui<Version.SystemTyp>.deb
```

For KDE and Gnome the installation routine generates a link on the root user Desktop to start the GUI. This link has to be adjusted to the correct *SEP sesam* server. Please open the properties of the link and add the following parameter to the command line

-S <SEP sesam Server Name>

3 Installation of *SEP sesam* V4.2 on MacOS

3.1 Prerequisites

Before starting the *SEP sesam* installation please make sure that you are logged in as local administrator or domain administrator. In order to install a *SEP sesam* component an installation file is required which can be downloaded at <http://download.sep.de/>.

If you are planning to install a GUI, Java Runtime Environment (JRE) 1.6 or higher has to be installed.

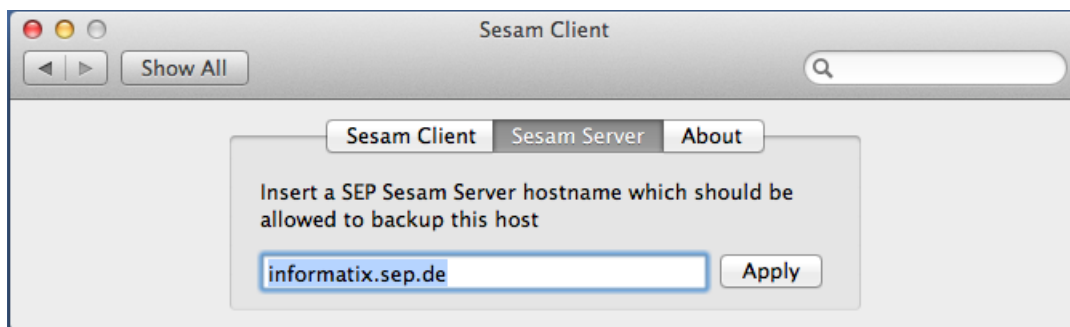
There are two different installation packages available for MacOS providing *SEP sesam* components. The *SEP sesam* client installation package and the *SEP sesam* GUI installation package, including the *SEP sesam* client.

3.2 Client installation package

In order to install a *SEP sesam* client please choose the `macos` directory on the CD/DVD, or choose the download folder where you saved the *SEP sesam* installation package to.

Start the installation by double-clicking on the `sesam-cli_<VersionsID>-macosx.pkg` file.

Since the *SEP sesam* server needs access rights to the MacOS client to be able to contact and backup the client, you need to insert the server hostname. This can be done in the System Preferences Pane under Sesam Client which is opened directly after installation has been finished. Goto the Sesam Server tab, insert the *SEP sesam* server hostname, and hit Apply.



In the Sesam Client tab you can see if the service is running.

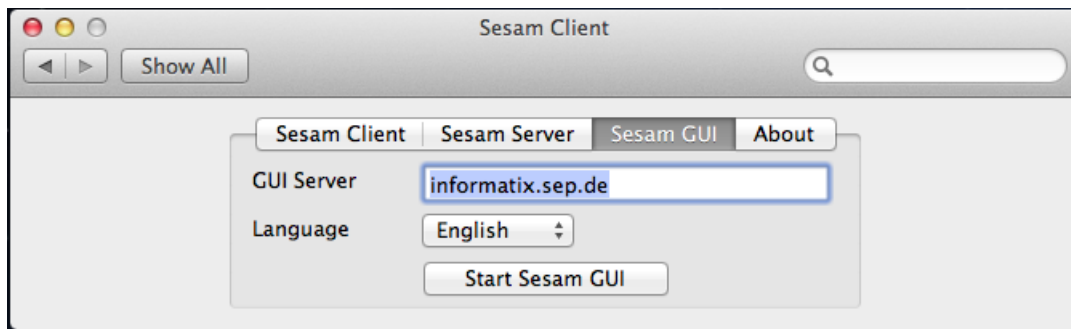
3.3 GUI installation package

In order to install a *SEP sesam* gui please choose the `macos` directory on the CD/DVD, or choose the download folder where you saved the *SEP sesam* installation package to.

Start the installation by double-clicking on the `sesam-gui_<VersionsID>-macosx.pkg` file.

Since the *SEP sesam* server needs access rights to the MacOS client (included in the gui package) to be able to contact and backup the client, you need to insert the server hostname. This can be done in the System Preferences Pane under Sesam Client which is opened directly after installation has been finished. Goto the Sesam Server tab, insert the *SEP sesam* server hostname, and hit Apply. In the Sesam Client tab you can see if the service is running.

In the Sesam Client tab you can see if the service is running.



In the Sesam GUI tab you can connect to a *SEP sesam* GUI server. To start the GUI insert the name of the GUI server to connect to, select the GUI language, and hit Start Sesam GUI.

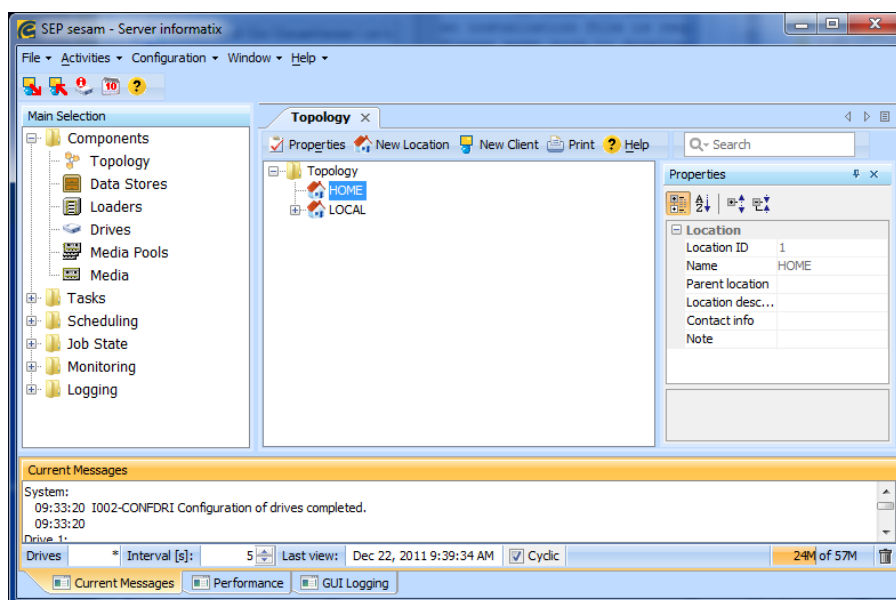
4 Configuration - SEP sesam first steps

In the following you will find a quick description of a typical *SEP sesam* configuration. For more detail information concerning all existing *SEP sesam* functions and configurations can be found in the user manual http://wiki.sepsoftware.com/wiki/index.php/User_Manual or in the documentation as well as in the FAQs of the *SEP sesam* Wiki http://wiki.sepsoftware.com/wiki/index.php/Main_Page.

4.1 Step 1 Location

At the beginning you have to decide which operating systems should be backed up with *SEP sesam*. For this purpose you need the name and configuration of all target computer.

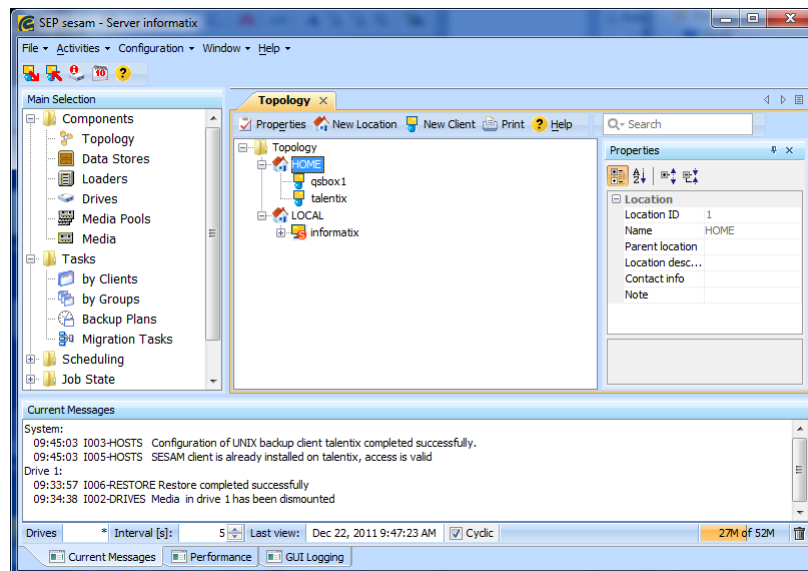
In your GUI at *Components -> Topology* you can choose arbitrary location names and descriptions, since each client has to be assigned to a distinct location. By default the location LOCAL is created on a server (in our example informatix). Go to *Components -> Topology* and press *New Location* on the taskbar. Please insert the Name *HOME* and hit *OK*. By now your Topology should look as follows.



4.2 Step 2 Clients

To add clients to the just created location go to *Components -> Topology -> HOME -> new Client*. Depending on the operating system running on the client you have to choose one of the following platforms: Windows, UNIX, VMS oder NETWARE. The name of the client has to be the network host name of the computer. The name has to be resolvable either by DNS or hosts-file. Please insert the platform specific operating system of the client in the corresponding box.. The dialog *Task for new client* appears right after confirming the client by pressing *OK*, please select no.

In our example we added a Windows (*qsbox1*) and a Linux (*talentix*) client to our location HOME. After configuring each of the clients we selected no in the *Task for new client* dialog.



4.3 Step 3 Backup Hardware - Where should the data be stored?

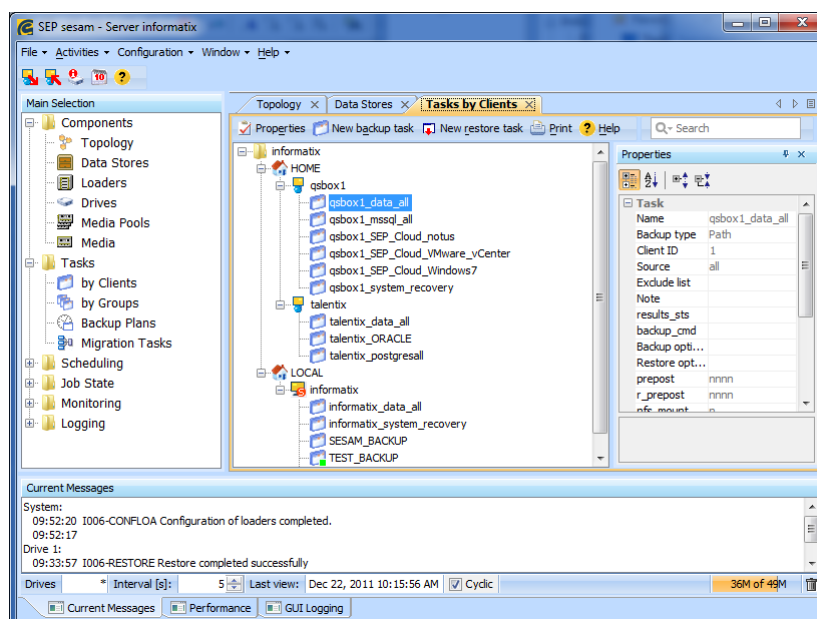
During the installation process *SEP sesam* checks the SCSI-bus for connected backup hardware and inserts their data in the *SEP sesam* database.

You can see available data stores i.e. DiskHard and DiskChange by selecting *Components* -> *Data Stores*. By default a data store (Test-Store) is created on the *SEP sesam* partition. In the following we will use the existing *Test-Store* for our sample back up.

4.4 Step 4 Tasks - What should be backed up?

Choose the location of interest in *Tasks* -> *by Client*, in our example we choose *HOME*, and select the client to be backed up. Then select *New backup task* from the taskbar.

Please insert the description for a backup task in the appearing window. The task name can be chosen arbitrarily (max. 32 characters). We recommend to use descriptive names. The input box *Source* comprises the drives, folders, and files that will be backed up.

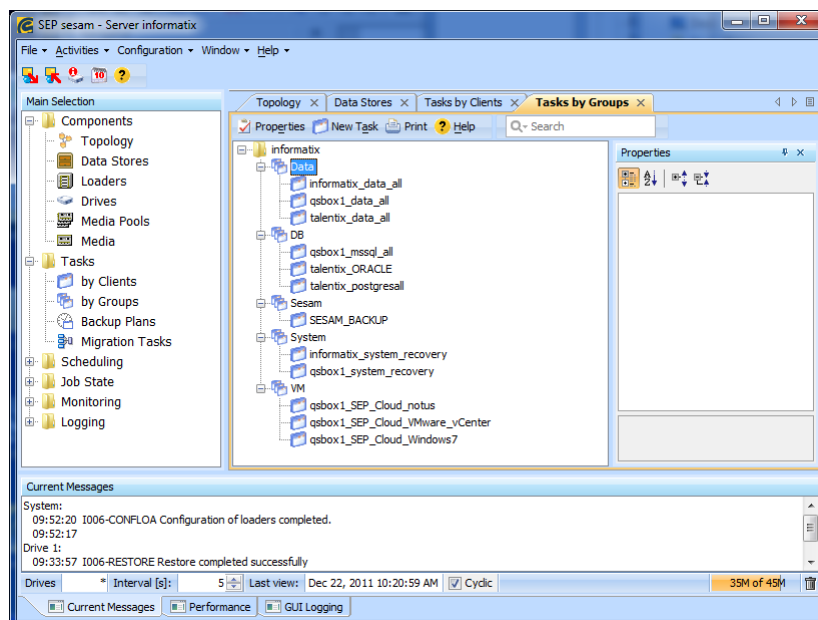


For our sample system we create a total of 13 backup tasks

- one backup task for your *SEP sesam* (SESAM_BACKUP, created automatically)
- one System Recovery backup task for each Windows system (qsbox1_system_recovery, informatix_system_recovery)
- one all backup task per Client for all data (qsbox1_data_all, talentix_data_all, informatix_data_all). Please make sure to check the Option VSS for each Windows client.
- one backup task for each database (qsbox1_mssql_all, talentix_ORACLE, talentix_postgresall)
- one backup task for each virtual machine (qsbox1_SEP_Cloud_notus, qsbox1_SEP_Cloud_VMware_vCenter, qsbox1_SEP_Cloud_Windows7)

Those backup tasks can be grouped in our *Tasks -> by Groups* menu. Please choose *New Task Group* and insert a name, then select the tab *Assign Tasks* and choose the backup tasks you want to assign to the task group on the left and move them to the right by pressing the right arrow to the right.

In our sample system we create a group for each backup typ, i.e. we end up having 5 backup task groups.

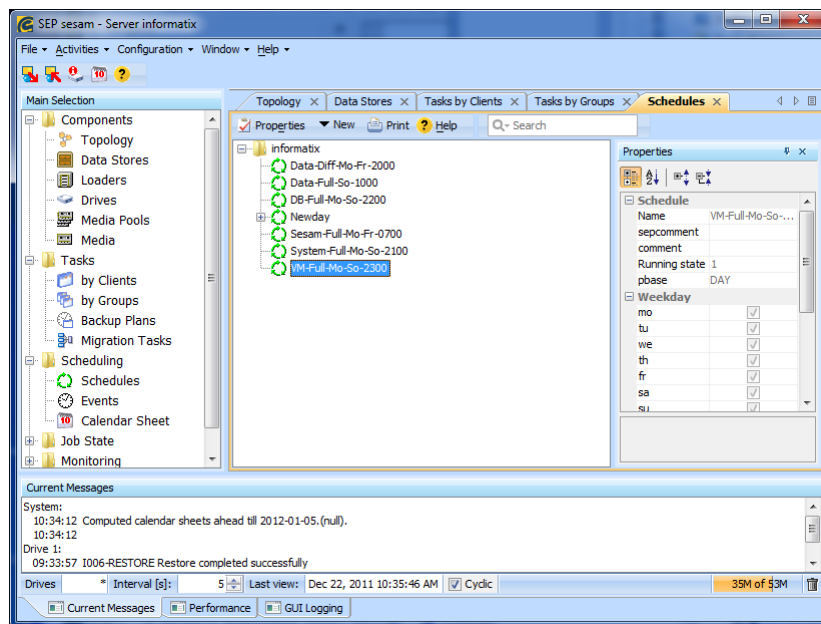


4.5 Step 5 Schedules - When should the data be backed up?

Please switch to *Scheduling* -> *Schedules*. This window gives an overview of the configured schedules and their appointed date. All *SEP sesam* schedules can be controlled from here.

We recommend the following schedules

- 1 schedule (Diff, Mo.-Fr.) for all your data (regardless of the operating system), begin 8:00 pm
- 1 schedule (Full, weekly) for all your data (regardless of the operating system), begin 10:00 am
- 1 schedule (Full, daily) for your system, begin 9:00 pm
- 1 schedule (Full, daily) for the *SEP sesam* self backup, begin 07:00 am
- 1 schedule (Full, daily) for all your databases, begin 10:00 pm
- 1 schedule (Full, daily) for all your virtual machines, begin 11:00 pm



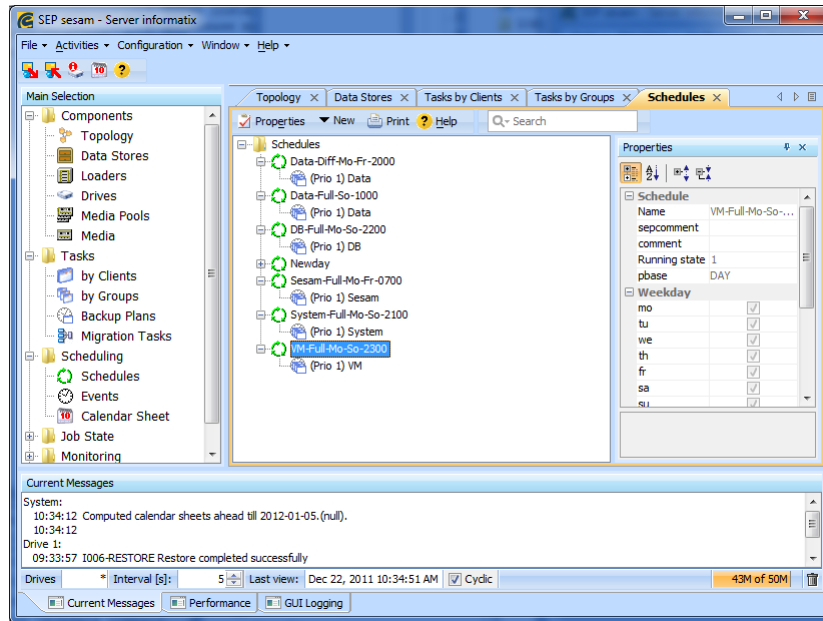
Please choose *New* -> *New Schedule* from the taskbar. Start by inserting a descriptive name for the schedule, like e.g. *Data-Diff-Mo-Fr-2000*, in case of a differential backup each working day at 8:00 pm. Then select the tag weekly and check Monday through Friday. Finally you have to insert the start time, in our case 20:00 o'clock and hit *OK*.

For a one-time execution of the schedule right-click on the schedule and select *Immediate Start*. In the appearing dialog choose default priority and click on *OK* to start the backup.

4.6 Step 6 Backup event - How should the backup start?

To configure a cyclic backup we use the schedules that we just created. To realize a cyclic execution we have to create a *New Backup Event* for each schedule. The backup event is inserted in the *SEP sesam* calendar which will then be executed by the SEPuler to the given timepoint.

To generate a backup event please active on of the created schedules and choose *New* -> *New Backup Event* on the taskbar. In the given example in case of the *Data-Diff-Mo-Fr-2000* schedule choose the Backup typ DIFF, the Media pool TEST-POOL and the Task Group Data, which we created earlier. We repeat this procedure using adequate settings all our schedules. In the next figure you see our thoroughly configured system.



At this time point we have a completely configured system which will execute the newly created backup jobs at the given timepoints.

Finally, after the execution of your backup event you can control the correct execution of your backups either in the menu *Scheduling -> Calendar Sheet* or in the menu *Job State -> Backups*.